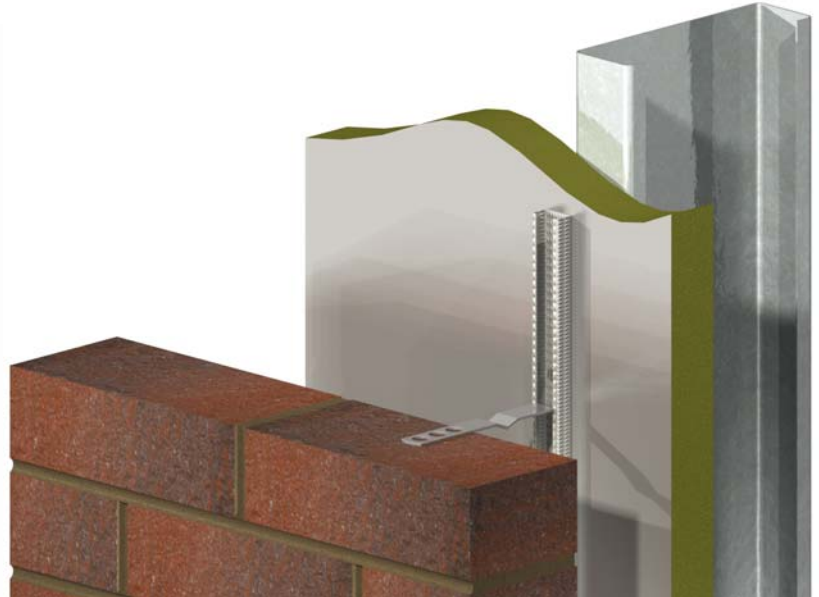


# Technical Data Sheet

## ACS Frame Fix Ultra

- ✓ BS EN 845 Channel Tie
- ✓ Meets NHBC Requirements
- ✓ ACS 4000 Range Tie
- ✓ Exceeds Type 3 Capacity
- ✓ Grade 304 Stainless Steel
- ✓ High Strength Ultra Steel



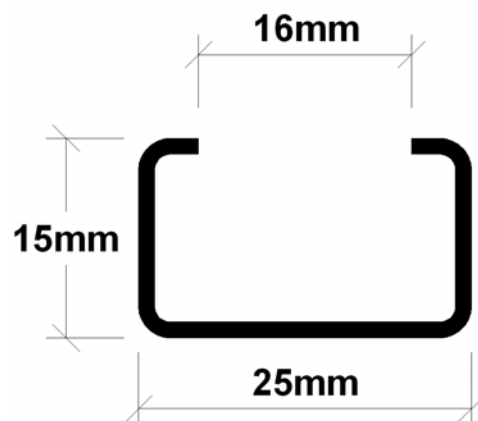
### Technical Data

ACS Frame Fix Ultra is designed for tying a masonry panel back to steel studding posts. The channel is fixed back to the studding using self-drilling/tapping Tech Screws fixed through the channel and insulation material, into the steel studding.

The channel is fixed back to the structure via the pre-punched holes at close centers to allow the fixing point to be selected depending on the application. Once fixed, ACS 4000 range ties can be positioned at any point along the channel to suit the coursing of the masonry panel.

The Ultra Steel advanced material forming process has been extensively tested and developed and its integration into the manufacture of the 25/15 channel provides a range of performance enhancing benefits, including:

- Added Strength
- Increased Load Carrying Capacity
- Reduced Deflection
- Increased Memory & Spring Tension
- Improved Acoustic & Thermal Benefit
- Improved Fire Test Performance



For further information or technical assistance please contact the ACS Technical Department on 0844 850 0860 or email [technical@acsstainless.co.uk](mailto:technical@acsstainless.co.uk)

**LEEDS**  
Cross Green Approach  
Cross Green Industrial Park  
Leeds LS9 0SG  
Tel: +44 (0)113 391 8200  
Fax: +44 (0)113 391 8209

**LONDON**  
Crown House  
Home Gardens  
Dartford

Tel: +44 (0)1322 424 510  
Fax: +44 (0)1322 424 504

**GLASGOW**  
Festival House  
150 Brand Street  
Glasgow G51 1DH

Tel: +44 (0)141 314 0048  
Fax: +44 (0)141 314 0026



# Technical Data Sheet

## Installation

The channel should be fixed back to the studding which is normally set at 600mm horizontal centres; ties can then be positioned at any point along the length to suit the mortar joint at the specific vertical centres required. (Nominally 450mm)

## Frame Fix Ultra Load Capacities

The channel is designed as a point loaded beam with partial fixity at the fixing points. By adjusting the fixing centres the allowable load per tie is increased or reduced.

Fixings Centres (mm)	Allowable Load (kN)
150	0.50
200	0.50
300	0.50
450	0.37
600	0.28

Table 1.0 – Fixing centres & Allowable Loads

**Note:** The loads above are limited to 0.5kN due to the channel being used in conjunction with a wall tie. These loads can only be guaranteed when ACS Frame Fix Ultra is used in conjunction with ACS 4000 range ties.

## Tie Centres

The tie spacing is based on the channel being fixed at 600mm horizontal centres with a nominal wind speed <25m/s within a town or city following the guidance of design code BS 6399-2:1997.

Altitude & Distance from Coast	Vertical tie spacing (mm) For given height of brickwork		
	15m	25m	40m
Up to 150m & at least 50km from coast	450	225	225
Up to 25m & within 50km of coast	450	300	225

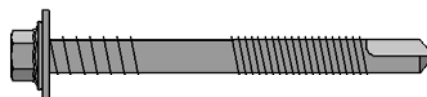
## Fixings Screws

The ACS 25/15 Frame Fix Ultra Channel is designed to fix to the studwork at 450mm vertical centres. The pre-punched holes in the rear of the channel are spaced at 112.5mm so a fixing can always be positioned near the end of the channel. Self-tapping screws can be supplied to accommodate for fixing through insulation board of up to 90mm.

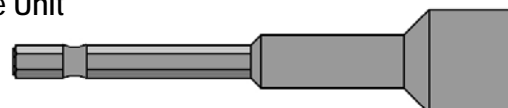
ACS can supply either stainless steel or galvanised screws for fixing the channel back to the structure.

The opening in the channel will readily accept a standard drive socket and fixing.

## 25/15 Fixing Screw



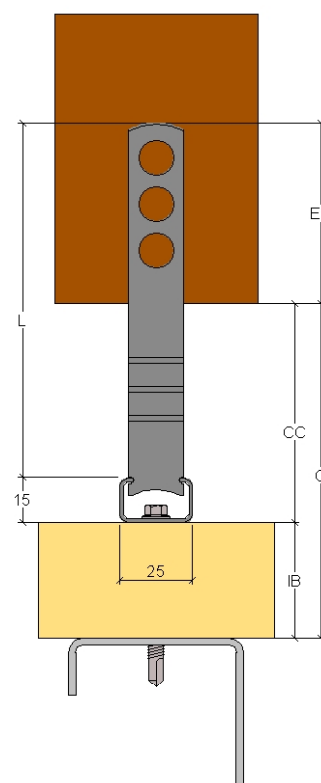
## Drive Unit



## Tie Length

Insulation Thickness	Stainless Steel Screw	Hardened Steel Zinc Plated Screw
25-40mm	25/15FS65-SS	25/15FS65-BZP
40-60mm	25/15FS75-SS	25/15FS75-BZP
60-70mm	25/15FS85-SS	25/15FS85-BZP
70-90mm	25/15FS105-SS	25/15FS105-BZP
Drive Unit	TSDU-SS	TSDU-BZP

*Note: Fixings for alternative thicknesses of insulation are available upon request*



L	Tie Length	Eb + CC – 15
Eb	Embedment	62.5mm (Min 50mm)
CC	Clear Cavity	C – IB
C	Structural Cavity	Varies
IB	Insulation Board	Varies

For further information or technical assistance please contact the ACS Technical Department on 0844 850 0860 or email [technical@acsstainless.co.uk](mailto:technical@acsstainless.co.uk)

**LEEDS**  
Cross Green Approach  
Cross Green Industrial Park  
Leeds LS9 0SG  
Tel: +44 (0)113 391 8200  
Fax: +44 (0)113 391 8209

**LONDON**  
Crown House  
Home Gardens  
Dartford

Tel: +44 (0)1322 424 510  
Fax: +44 (0)1322 424 504

**GLASGOW**  
Festival House  
150 Brand Street  
Glasgow G51 1DH

Tel: +44 (0)141 314 0048  
Fax: +44 (0)141 314 0026

