



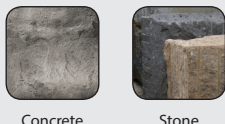
Product Information

- Variety of uses including: Fixing of brick ties, conduit clips, signs and drywall track into concrete and masonry.
- Fast and easy installation.

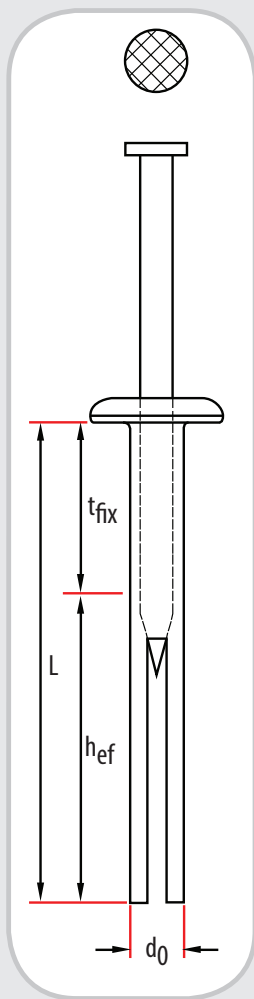
Key Features

- Steel nail
- Large diameter flange head to firmly secure attachments
- Zinc alloy body

Materials



Concrete Stone



L - Length
 d₀ - Drill Size
 t_{fix} - Max Fixture Thickness
 h_{ef} - Embedment Depth

Metal Nail In Anchors

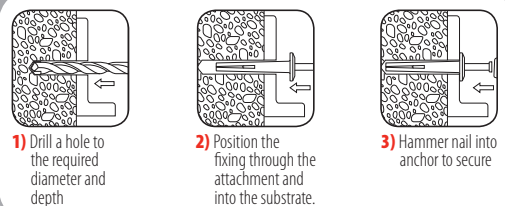
TIMco Code	Size Ø x Length (mm) d x L	Max Fixture Thickness (mm) t _{fix}	Fixture Clearance Hole (mm) h ₀	Box Qty	Carton Qty	Pallet Qty
0630ZNA	6 x 30	5	6.5	100	1,800	64,800
0640ZNA	6 x 40	15	6.5	100	1,000	30,000
0650ZNA	6 x 50	25	6.5	100	800	24,000
0665ZNA	6 x 65	40	6.5	100	800	24,000

Technical Data

Substrate	Concrete ≥ 25 N/mm ²
Size Ø (mm)	6
Drill Hole Ø (mm) d ₀	6
Embedment Depth (mm) h _{ef}	25
Min Drill Hole Depth (mm) h ₀	35
Rec. Tensile Load (kN) N _{rec}	0.70
Rec. Shear Load (kN) V _{rec}	1.22

Not recommended for overhead applications such as suspended ceilings.

Installation Guide



- 1) Drill a hole to the required diameter and depth
- 2) Position the fixing through the attachment and into the substrate.
- 3) Hammer nail into anchor to secure

Applications

